

LysiGEM™

Amino acid balancing requires the combination of Lysine and Methionine. Kemin is the only supplier to offer both essential and complementary products to allow amino acid balancing in a reliable way. And the only partner to provide you with the know-how and support to achieve the most optimal results. Our Lysine solution, LysiGEM, has rumen bypass benefits and delivers the amount of bioavailable and digestible Lysine the ruminant needs.

Lysine is an essential nutrient for ruminant formulation. Therefore, we must cover Lysine requirements in different stages and depending on different dietary feed ingredients.

- 70% Lysine HCl
- 56% Lysine*
- 83% Rumen Escape*
- 91% Intestinal Availability*
- 423 g of MP Lysine/kg of product*

*Based on LysiGEM Matrix Values, independent from any label, spec sheet and/or COA claim.

Average inclusion range in standard diets



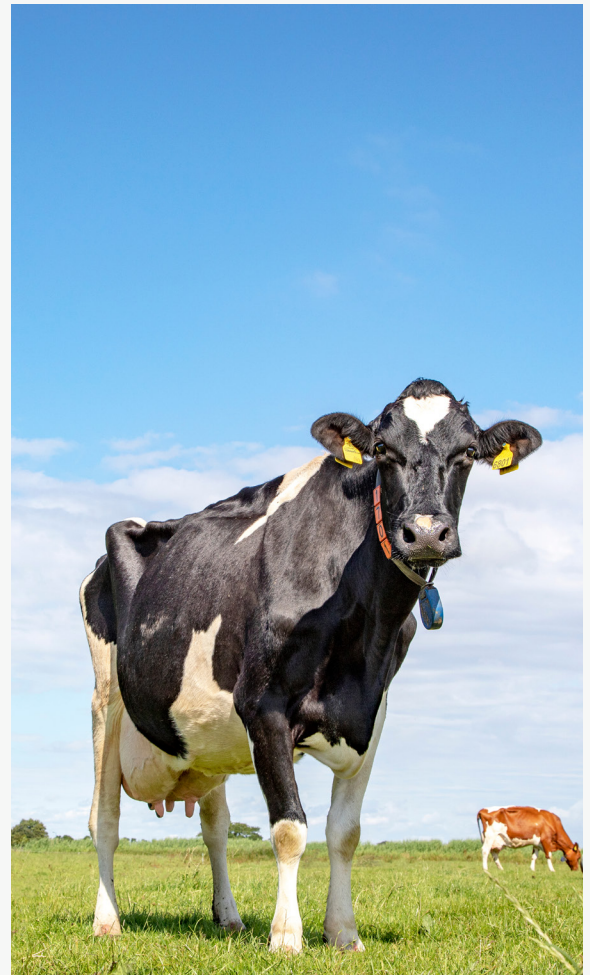
DAIRY COW

10-50 g per head per day



BEEF CATTLE

14-25 g per head per day

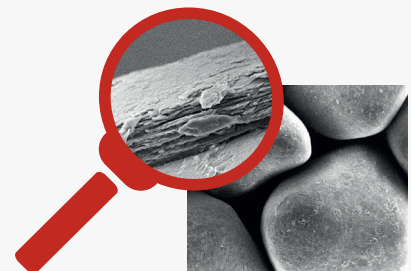


FAT COATING PHYSICAL PROTECTION



LysiGEM MICROCAPSULES

(small GEMs of Lysine HCL specially coated to ensure the best rumen protection rate and the highest intestinal availability)



kemin.com/lysigem

© Kemin Industries, Inc. and its group of companies 2020. All rights reserved.
*™ Trademarks of Kemin Industries, Inc., U.S.A.