

# applicator

MONITORING

This app is an effective applicator dashboard which gives you the ability to monitor the system and see problems as they're happening.

Proactive customer support assures the continuity of our services, builds trust and loyalty.

In a later stage, a predictive maintenance module will be added which assists the Kemin Application Solutions (KAS) teams with early warning notifications which give the KAS field teams the opportunity to investigate and fix the issue before any customers are affected.

Most application systems are PLC controlled in combination with a Human Machine Interface (HMI), like a touch panel, to monitor and control the system locally. The dosing system pushes process data via the industrial IoT gateway in an end-to-end secured protocol to the KEMINCONNECT™ platform where it's validated, aggregated and stored.



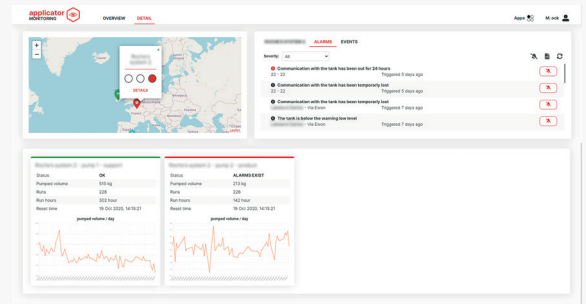
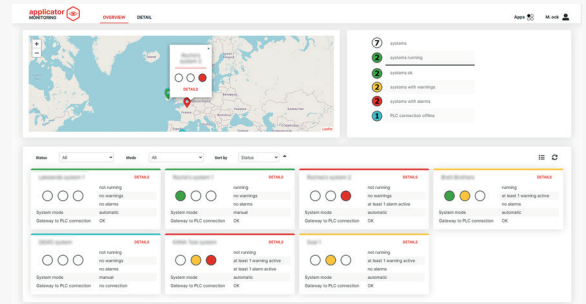
## BENEFITS

- Assure service continuity
- Deliver on our promise
- Understand better how application systems work and perform



## FEATURES

- **Critical Warnings and Alerts**  
Automatically sends e-mail or text message alerts to preselected users, based on system configuration and role based access
- **Geo mapping**  
Application systems are displayed on a map to assist
- **System status at a glance**  
Visualize applicator KPIs via smart dashboard
- **Reporting and trending**  
Data is stored for 3 years and can easily be accessed



## CONNECTIVITY:



Ewon®



Cradlepoint



Weintek



Ewon is a registered trademark of HMS Networks.  
© Kemin Industries, Inc. and its group of companies 2021. All rights reserved.  
®™ Trademarks of Kemin Industries, Inc., U.S.A. Certain statements, product labeling and claims may differ by geography or as required by government requirements.

[kemin.com/  
service-to-customers](http://kemin.com/service-to-customers)

